

Simplifying Cloud-Edge simulations with Python

Valerio De Caro

valerio.decaro@di.unipi.it



Jacopo Massa

jacopo.massa@di.unipi.it

ECLYPSE

Department of Computer Science, University of Pisa, Italy

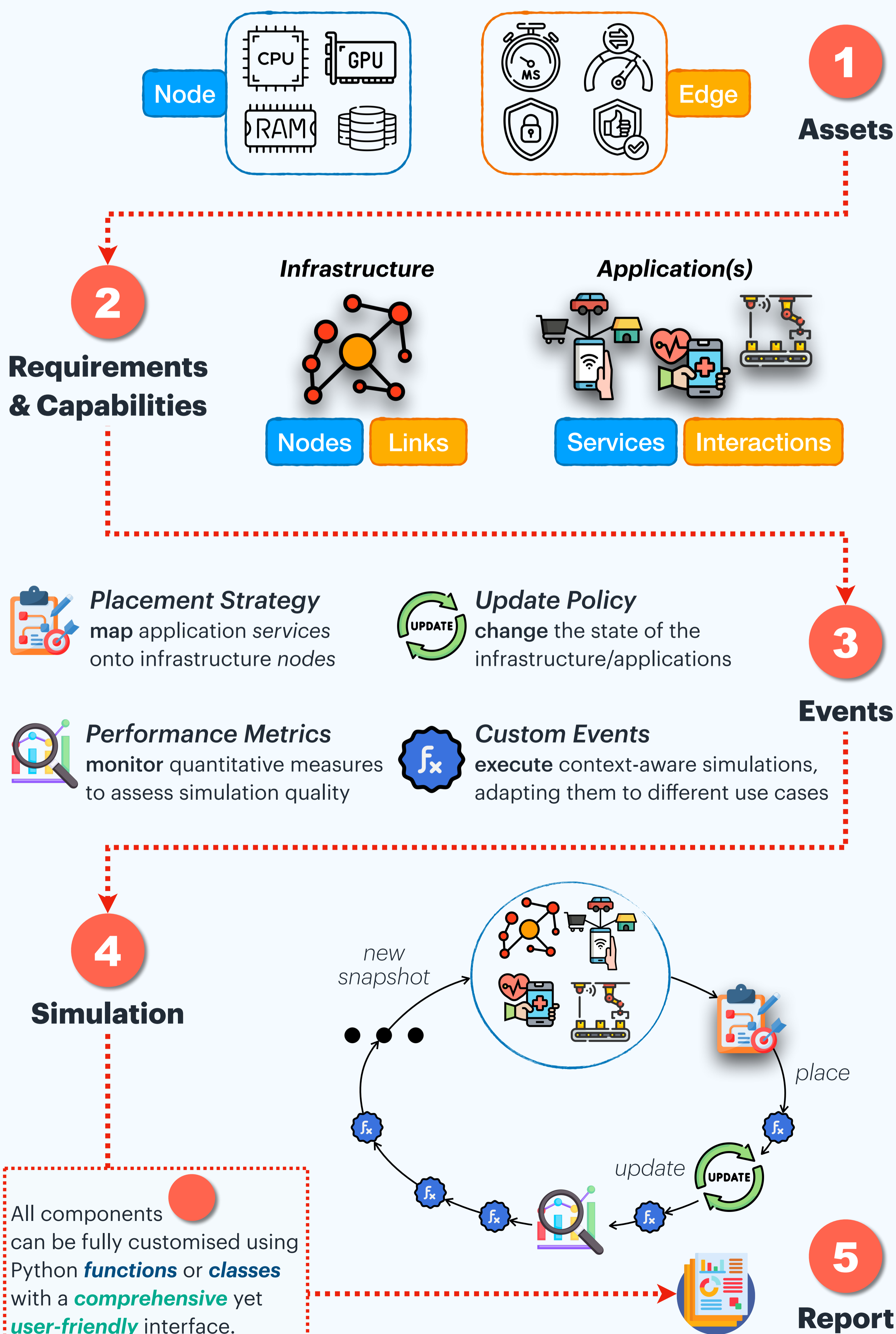
WHY ?

- Cloud-Edge continuum is **heterogeneous**, **dynamic** and **QoS-sensitive**
- Simulation is **not enough**
- Lack of **user-friendly** and **accessible** tools that easily capture the environment complexity

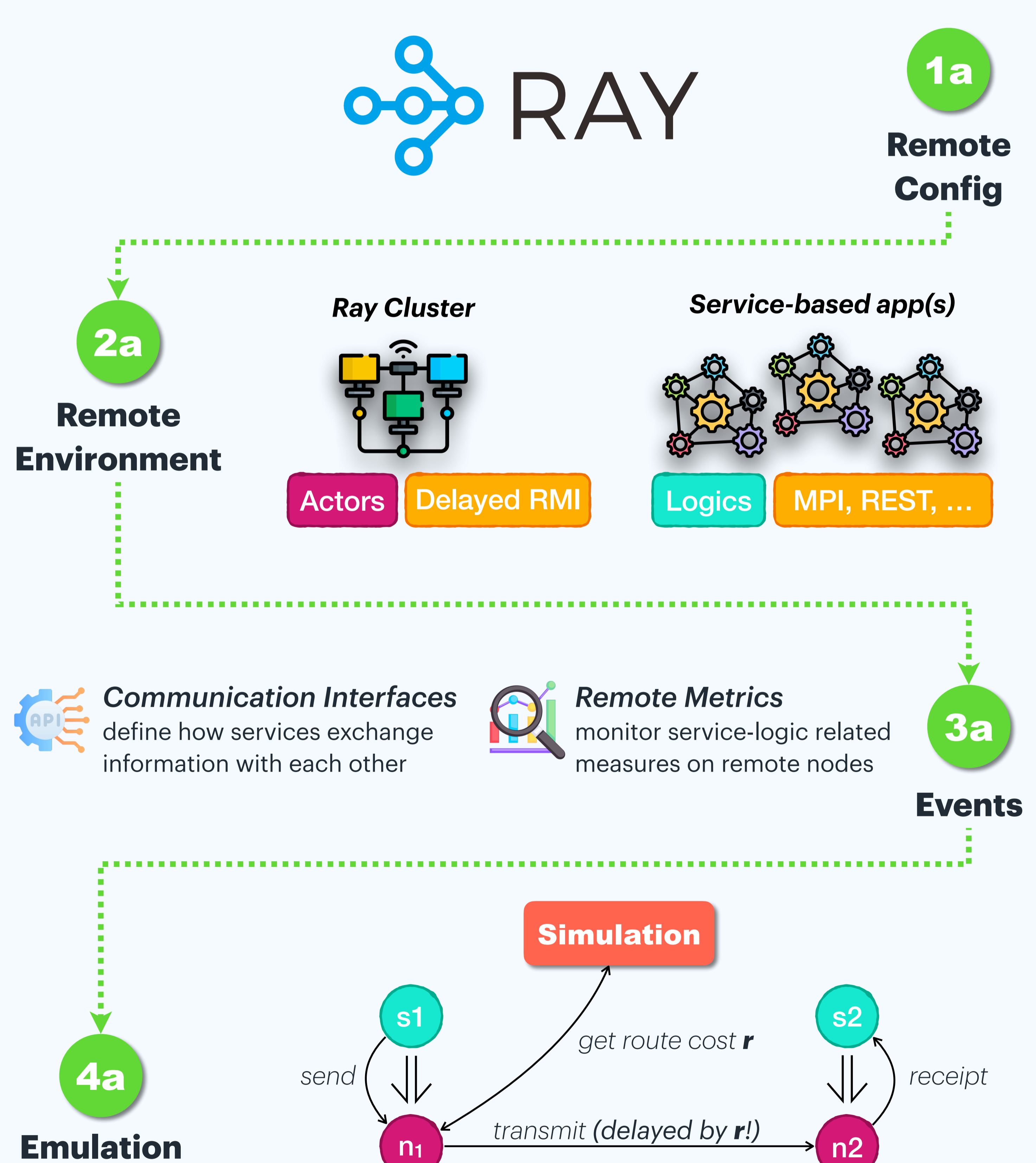
WHAT ?

- A Cloud-Edge **Python platform** for simulated/emulated runtime environments
- Designed to **manage**, **monitor** and **test** complex Cloud-Edge scenarios
- Allow the modelling of **real-world** infrastructures and application behaviours (even ML-oriented).

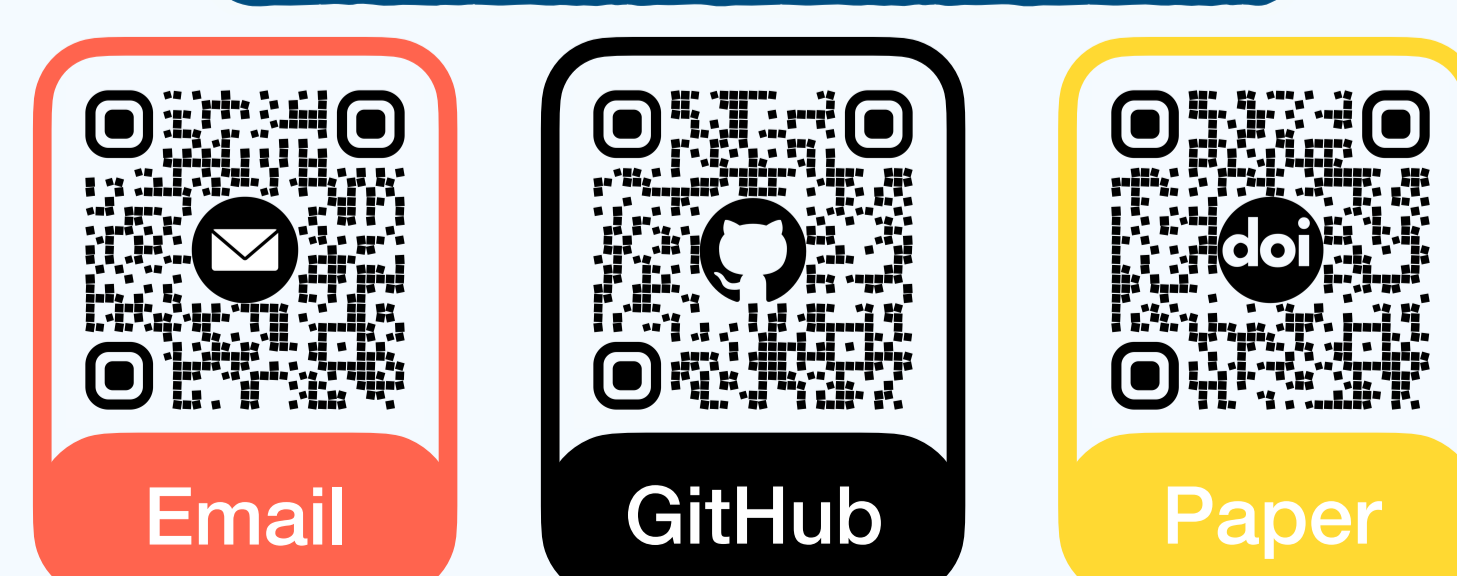
SIMULATION



EMULATION



KEEP US IN TOUCH



TRY ECLYPSE

